



# Load Rating Chart

***Model 2892S***

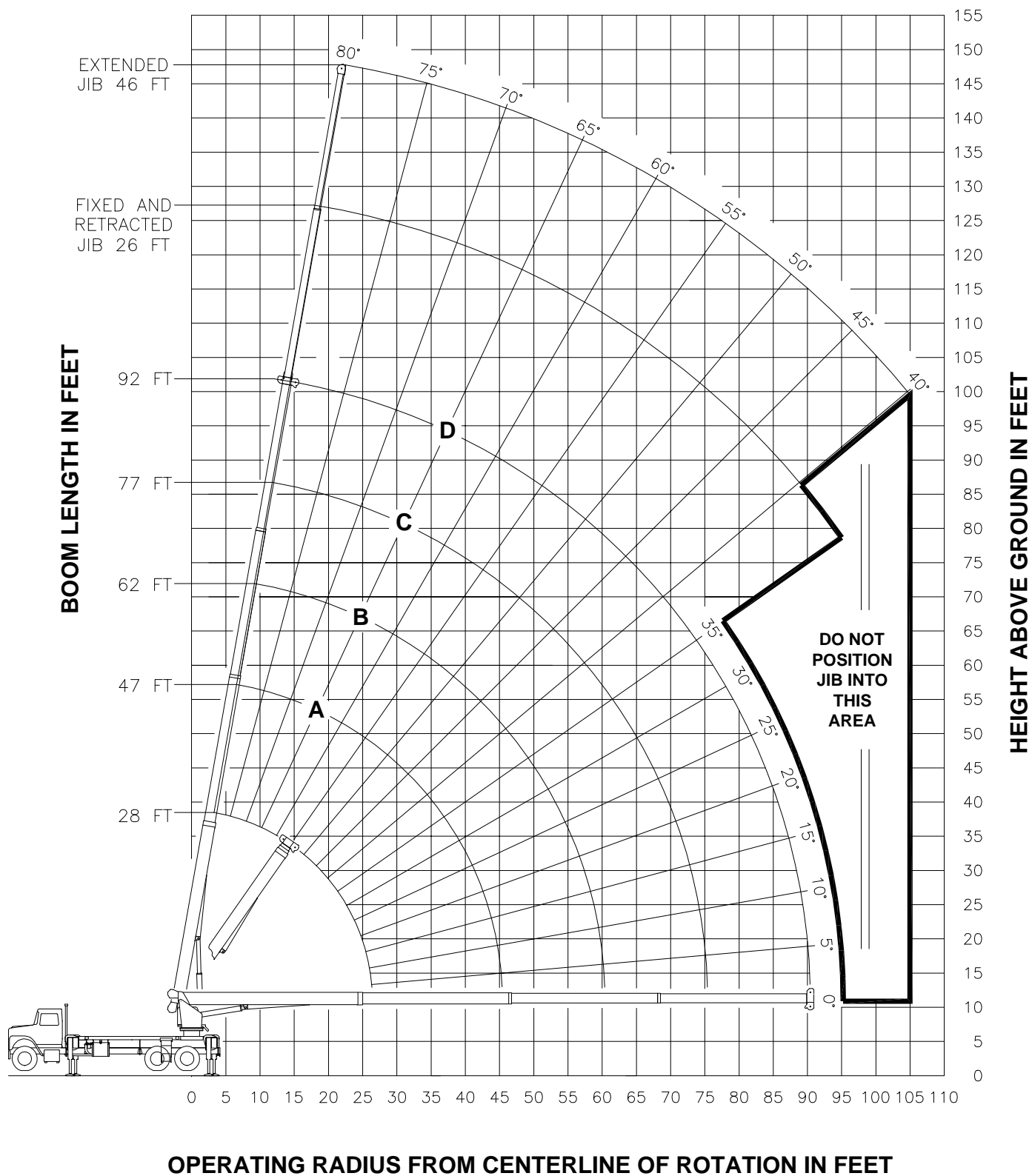


© **Manitex 2000**

**NOTE:** Additional copies of this Load Rating Chart can be purchased from your Manitex Distributor. When ordering, use the part number shown in the bottom left corner of this page.

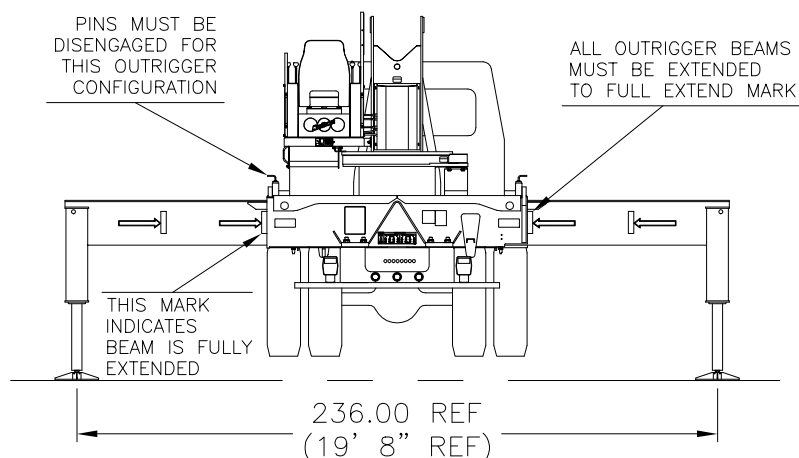


## RANGE DIAGRAM - FULLY EXTENDED OUTRIGGER CONFIGURATION -





**USE THIS CHART ONLY  
WHEN ALL OUTRIGGERS  
ARE FULLY EXTENDED**

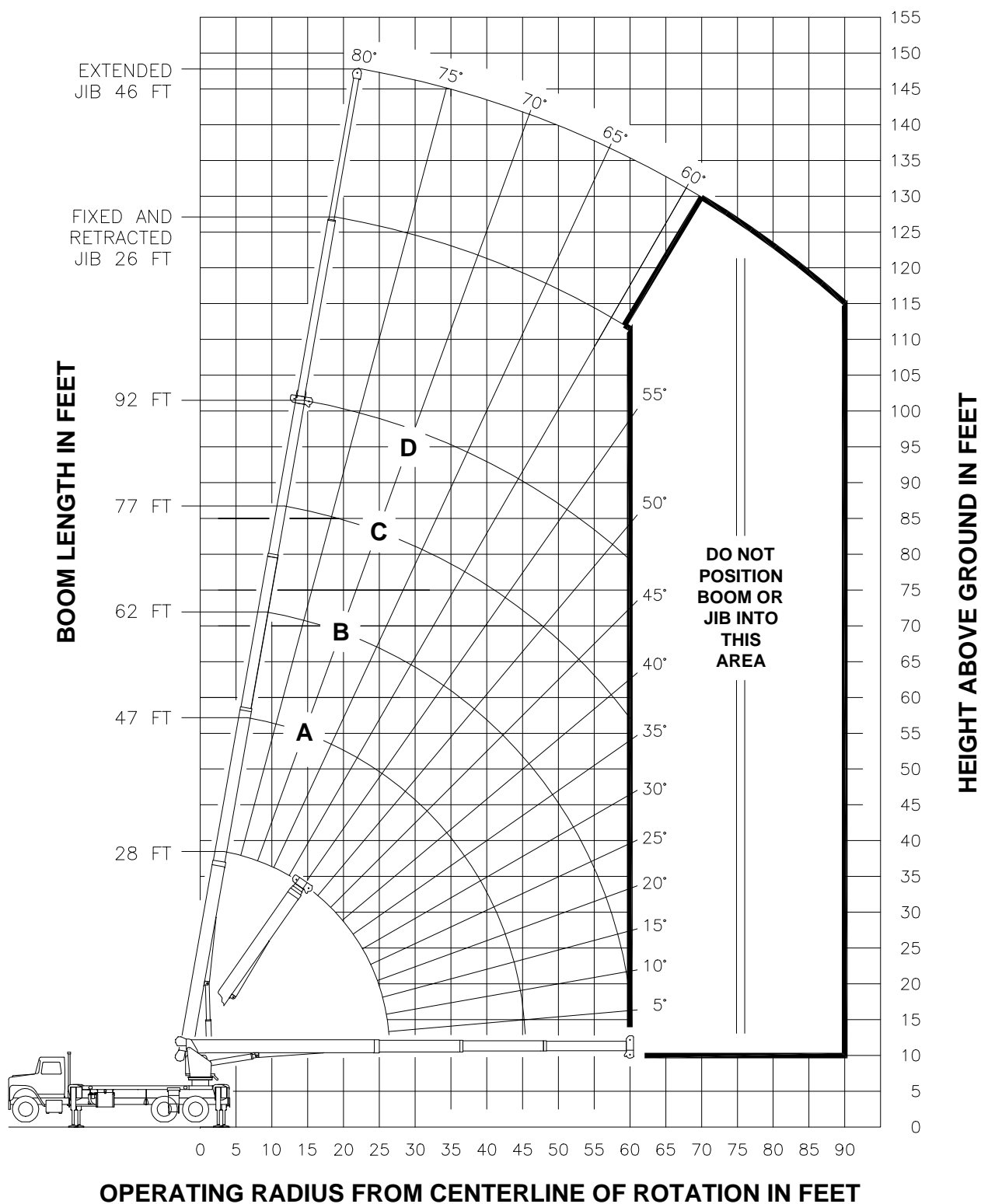


### - FULLY EXTENDED OUTRIGGER CONFIGURATION -

MAIN BOOM LOAD RATINGS IN LBS WITH OUTRIGGERS PLACED AS SHOWN AND THE CRANE LEVEL										JIB LOAD RATINGS IN LBS WITH OUTRIGGERS PLACED AS SHOWN AND THE CRANE LEVEL					
LMI CODE #1										FIXED JIB		TELESCOPIC JIB			
OPERATING RADIUS FT	LOADED BOOM ANGLE BOOM LENGTH AND MARKER			LMI CODE #2						LMI CODE #3		LMI CODE #4			
				BOOM LENGTH FOR ALL BOOM LENGTHS SEE WARNING NOTE 4		BOOM LENGTH FOR ALL BOOM LENGTHS SEE WARNING NOTE 4		BOOM LENGTH FOR ALL BOOM LENGTHS SEE WARNING NOTE 4		BOOM LENGTH FOR ALL BOOM LENGTHS SEE WARNING NOTE 4		BOOM LENGTH FOR ALL BOOM LENGTHS SEE WARNING NOTE 4		BOOM LENGTH FOR ALL BOOM LENGTHS SEE WARNING NOTE 4	
	28 FT	47 FT	62 FT	77 FT	92 FT	26 FT	26 FT	46 FT							
5	79 56000														
8	73 40670														
10	69 34520	78 22500													
12	64 30130	76 22500	80 22500												
15	57 23660	72 22310	77 20960	80 15920											
20	43 16950	65 17280	72 16920	77 13540	79 10700										
25	22 12820	58 13210	67 13310	73 11710	76 9290	25 79 5600	79 5400								
30		50 10460	62 10570	69 10160	73 8330	30 77 5300	77 5100	79 3400							
35		41 8470	57 8580	65 8640	70 7320	35 75 4960	75 4700	77 3300							
40		30 6910	51 7030	60 7090	66 6460	40 72 4490	72 4230	76 3200							
45		11 5700	44 5850	56 5910	63 5730	45 70 4080	70 3820	74 3040							
50			36 4880	51 4960	59 5010	50 67 3710	67 3440	72 2800							
55			27 4000	46 4090	55 4140	55 65 3380	65 3100	69 2630							
60			10 3290	40 3400	51 3450	60 62 3080	62 2810	67 2480							
65				33 2820	47 2880	65 59 2820	59 2540	65 2310							
70				24 2340	42 2400	70 56 2520	56 2200	63 2110							
75				9 1930	37 2000	75 53 2110	53 1820	60 1940							
80					31 1650	80 50 1760	50 1470	58 1770							
85					23 1340	85 46 1460	46 1170	55 1610							
90					9 1070	90 42 1200	42 900	52 1350							
95						95 38 960	38 670	49 1120							
100								46 910							
105								43 720							
										DEDUCTIONS FOR STOWED FIXED JIB					
										DEDUCTIONS FOR STOWED TELESCOPIC JIB					



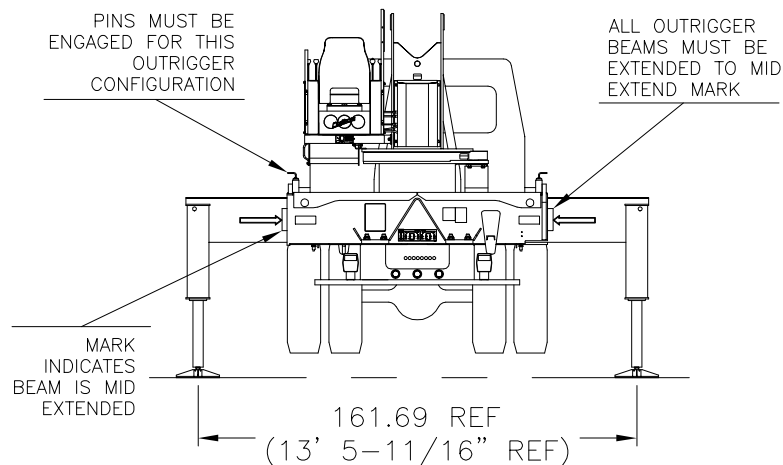
## RANGE DIAGRAM - INTERMEDIATE OUTRIGGER CONFIGURATION - (MID EXTEND)



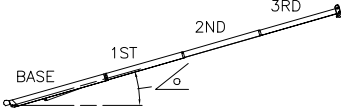
**NOTE :** LIFTING PERSONNEL WITH CRANE IN THIS OUTRIGGER CONFIGURATION IS STRICTLY PROHIBITED. USE ONLY FULLY EXTENDED OUTRIGGER CONFIGURATION WHEN LIFTING PERSONNEL.



**USE THIS CHART ONLY WHEN  
ALL OUTRIGGERS ARE IN THE  
INTERMEDIATE POSITION**

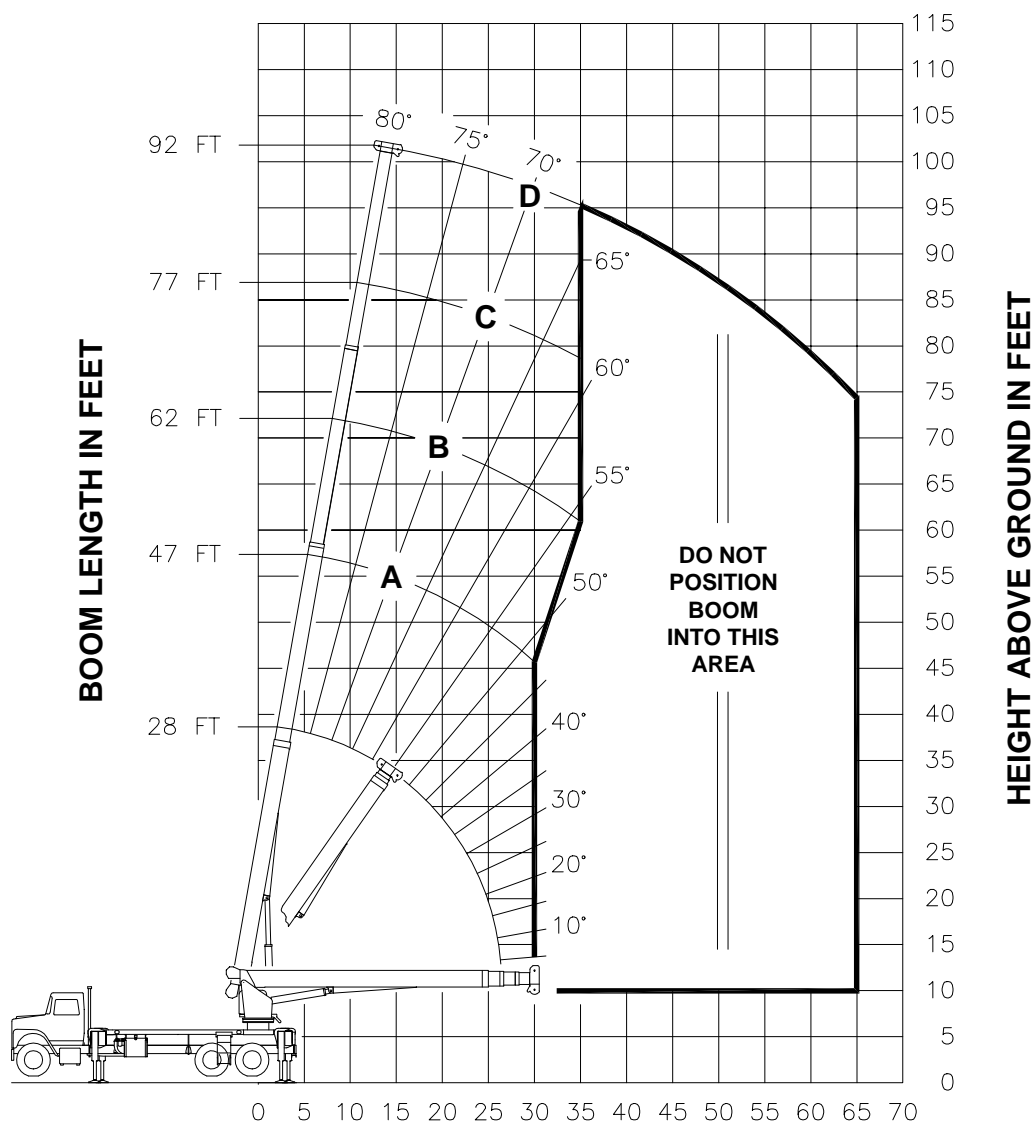


### - INTERMEDIATE OUTRIGGER CONFIGURATION - (MID EXTEND)

MAIN BOOM LOAD RATINGS IN LBS WITH OUTRIGGERS PLACED AS SHOWN AND THE CRANE LEVEL											JIB LOAD RATINGS IN LBS WITH OUTRIGGERS PLACED AS SHOWN AND THE CRANE LEVEL						
LMI CODE #9											FIXED JIB			TELESCOPIC JIB			
OPERATING RADIUS FT	LOADED BOOM ANGLE BOOM LENGTH AND MARKER										LMI CODE #10		LMI CODE #11		LMI CODE #12		
			A		B		C		D		OPERATING RADIUS FT	BOOM LOADED ANG	JIB LENGTH FOR ALL BOOM LENGTHS SEE WARNING NOTE 4	BOOM LOADED ANG	JIB LENGTH FOR ALL BOOM LENGTHS SEE WARNING NOTE 4	BOOM LOADED ANG	JIB LENGTH FOR ALL BOOM LENGTHS SEE WARNING NOTE 4
	28 FT	47 FT	62 FT	77 FT	92 FT	26 FT	26 FT	46 FT									
	5	79	56000									10					
8	73	40670									12						
10	69	34520	78	22500							15						
12	64	30130	76	22500	80	22500					20						
15	57	21360	72	21880	77	20960	80	15920			25	79	5600	79	5400		
20	43	12010	65	12460	72	12610	77	12700	79	10700	30	77	5300	77	5100	79	3400
25	22	7730	58	8200	67	8330	73	8410	76	8460	35	75	4530	75	4230	77	3300
30			50	5760	62	5890	69	5960	73	6010	40	72	3410	72	3110	76	3200
35			41	4180	57	4310	65	4380	70	4430	45	70	2590	70	2280	74	2780
40			30	3070	51	3210	60	3280	66	3320	50	67	1950	67	1650	72	2130
45			11	2220	44	2390	56	2460	63	2500	55	65	1450	65	1140	69	1620
50					36	1750	51	1830	59	1870	60	62	1040	62	740	67	1200
55					27	1250	46	1330	55	1370	65	59	700			65	860
60					10	820	40	920	51	960	70					63	570
65																	
70																	
											DEDUCTIONS FOR STOWED FIXED JIB						
	460 LBS		270 LBS		210 LBS		170 LBS		140 LBS		DEDUCTIONS FOR STOWED TELESCOPIC JIB						
	690 LBS		410 LBS		310 LBS		250 LBS		210 LBS								



## RANGE DIAGRAM - FULLY RETRACTED OUTRIGGER CONFIGURATION -

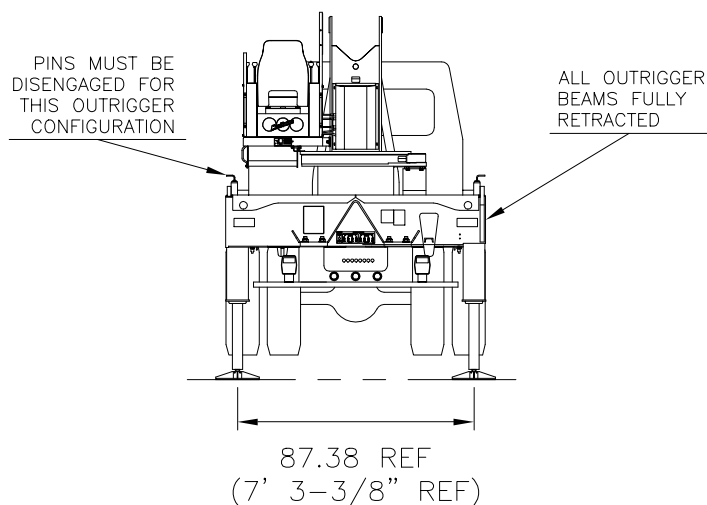


OPERATING RADIUS FROM CENTERLINE OF ROTATION IN FEET

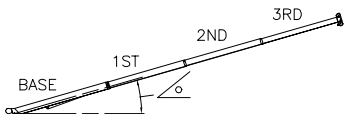
**NOTE :** LIFTING PERSONNEL WITH CRANE IN THIS OUTRIGGER CONFIGURATION IS STRICTLY PROHIBITED. USE ONLY FULLY EXTENDED OUTRIGGER CONFIGURATION WHEN LIFTING PERSONNEL.



**USE THIS CHART  
ONLY WHEN ALL  
OUTRIGGERS ARE  
FULLY RETRACTED**



**- FULLY RETRACTED OUTRIGGER CONFIGURATION -**

MAIN BOOM LOAD RATINGS IN LBS WITH OUTRIGGERS PLACED AS SHOWN AND THE CRANE LEVEL										
LMI CODE #13										
OPERATING RADIUS FT	LOADED BOOM ANGLE BOOM LENGTH AND MARKER									
			A	B	C	D				
			28 FT	47 FT	62 FT	77 FT	92 FT			
5	79	56000								
8	73	23040								
10	69	14740	78	15170						
12	64	10410	76	10800	80	10940				
15	57	6760	72	7130	77	7260	80	7330		
20	43	3640	65	4000	72	4120	77	4190	79	4230
25	22	1940	58	2340	67	2450	73	2510	76	2550
30			50	1300	62	1410	69	1470	73	1510
35					57	700	65	760	70	800
			460 LBS	270 LBS	210 LBS	170 LBS	140 LBS	DEDUCTIONS FOR STOWED FIXED JIB		
			690 LBS	410 LBS	310 LBS	250 LBS	210 LBS	DEDUCTIONS FOR STOWED TELESCOPIC JIB		

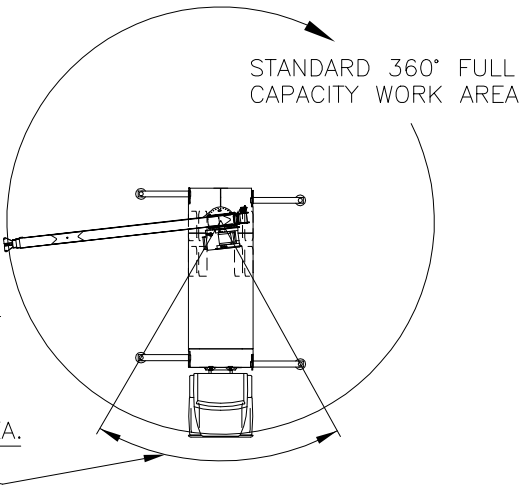
**NO JIBS ARE TO  
BE ERCTED IN  
THIS  
OUTRIGGER  
CONFIGURATION**



ALLOWABLE LINE PULL							WARNING
1 PART LINE	2 PART LINE	3 PART LINE	4 PART LINE	5 PART LINE	6 PART LINE	7 PART LINE	
							<p>ANTI-TWO-BLOCK SYSTEM MUST BE IN GOOD OPERATING CONDITION BEFORE OPERATING CRANE.</p> <p>REFER TO THE OWNER'S MANUAL.</p> <p>KEEP AT LEAST 3 WRAPS OF LOAD LINE ON THE DRUM AT ALL TIMES.</p>
8500 LBS	17000 LBS	25500 LBS	34000 LBS	42500 LBS	51000 LBS	56000 LBS	9/16" 6X25 IWRC (3.5:1 SF) – 29750 LBS MIN BREAKING STRENGTH
7400 LBS	14800 LBS	22200 LBS	29600 LBS	37000 LBS	44400 LBS	51800 LBS	9/16" ROT RESISTANT (5.0:1 SF) – 37000 LBS MIN BREAKING STRENGTH

AREA OF OPERATION

WARNING:  
THE FRONT TIRES MUST BE IN CONTACT WITH THE GROUND, AND THE MACHINE LEVEL, WHEN OPERATING IN THIS AREA.



DEDUCTIONS FROM RATED LOADS FOR LOAD HANDLING DEVICES SUPPLIED BY MANITEX.

AUXILIARY BLOCK	—	—	—	—	—	—	—	—	—	—	—	50 LBS
AUXILIARY SHEAVE	—	—	—	—	—	—	—	—	—	—	—	50 LBS
OVERHAUL BALL	—	—	—	—	—	—	—	—	—	—	—	SEE OVERHAUL BALL MANUFACTURER NAMEPLATE
LOAD BLOCK	—	—	—	—	—	—	—	—	—	—	—	SEE BLOCK MANUFACTURER NAMEPLATE
HOSE REEL	—	—	—	—	—	—	—	—	—	—	—	140 LBS
SWING AROUND JIB	—	—	—	—	—	—	—	—	—	—	—	SEE LOAD CHART



### LMI OPERATING CODES

SETTING	CRANE CONFIGURATION	OUTRIGGER CONFIGURATION
#1	— MAIN BOOM — — — — —	FULLY EXTENDED
#2	— FIXED JIB — — — — —	FULLY EXTENDED
#3	— TELESCOPIC JIB—RETRACTED — — — — —	FULLY EXTENDED
#4	— TELESCOPIC JIB—EXTENDED — — — — —	FULLY EXTENDED
#5	— PERSONNEL LIFTING PLATFORM ON MAIN BOOM — — — — —	FULLY EXTENDED
#6	— PERSONNEL LIFTING PLATFORM ON FIXED JIB — — — — —	FULLY EXTENDED
#7	— PERSONNEL LIFTING PLATFORM ON TELESCOPIC JIB—RETRACTED — —	FULLY EXTENDED
#8	— PERSONNEL LIFTING PLATFORM ON TELESCOPIC JIB—EXTENDED — — —	FULLY EXTENDED
#9	— MAIN BOOM — — — — —	INTERMEDIATE
#10	— FIXED JIB — — — — —	INTERMEDIATE
#11	— TELESCOPIC JIB—RETRACTED — — — — —	INTERMEDIATE
#12	— TELESCOPIC JIB—EXTENDED — — — — —	INTERMEDIATE
#13	— MAIN BOOM — — — — —	FULLY RETRACTED

### WARNING

1. THE OPERATOR MUST READ AND UNDERSTAND THE OWNER'S MANUAL BEFORE OPERATING THIS CRANE.
2. POSITIONING OR OPERATION OF CRANE BEYOND AREAS SHOWN ON THIS CHART IS NOT INTENDED OR APPROVED EXCEPT WHERE SPECIFIED IN OWNER'S MANUAL.
3. LOADED BOOM ANGLES AT SPECIFIED BOOM LENGTHS GIVE ONLY AN APPROXIMATION OF THE OPERATING RADIUS. THE BOOM ANGLE BEFORE LOADING SHOULD BE GREATER TO ACCOUNT FOR DEFLECTIONS. DO NOT EXCEED THE OPERATING RADIUS FOR RATED LOADS.
4. THE OPERATING RADIUS SHOWN IN THE JIB RATING CHART IS FOR FULLY EXTENDED BOOM ONLY. WHEN BOOM IS NOT FULLY EXTENDED, USE ONLY LOADED BOOM ANGLE TO DETERMINE LOAD RATING OF JIB.
5. FOR BOOM ANGLES NOT SHOWN ON JIB LOAD RATING CHART, USE RATING OF NEXT LOWER BOOM ANGLE.
6. FOR BOOM LENGTHS NOT SHOWN, USE RATING OF NEXT SHORTER OR LONGER BOOM LENGTH, WHICHEVER IS LESS. FOR RADII NOT SHOWN, USE RATING OF NEXT LONGER RADIUS.
7. CRANE LOAD RATINGS ON OUTRIGGERS ARE BASED ON FREELY SUSPENDED LOADS WITH THE MACHINE LEVELED AND STANDING ON A FIRM UNIFORM SUPPORTING SURFACE. NO ATTEMPT SHALL BE MADE TO MOVE A LOAD HORIZONTALLY ON THE GROUND IN ANY DIRECTION.



## **WARNING (CONTINUED)**

8. PRACTICAL WORKING LOADS DEPEND ON SUPPORTING SURFACE, WIND, AND OTHER FACTORS AFFECTING STABILITY SUCH AS HAZARDOUS SURROUNDINGS, EXPERIENCE OF PERSONNEL, AND PROPER HANDLING, ALL OF WHICH MUST BE TAKEN INTO ACCOUNT BY THE OPERATOR.
9. THE MAXIMUM LOAD WHICH MAY BE TELESKOPED IS LIMITED BY HYDRAULIC PRESSURE, BOOM ANGLE, AND BOOM LUBRICATION. IT IS SAFE TO ATTEMPT TO TELESCOPE ANY LOAD WITHIN THE LIMITS OF THE LOAD RATING CHART.
10. LIFTING OFF THE MAIN BOOM POINT WHILE THE SWING AROUND JIB IS ERECTED IS NOT INTENDED OR APPROVED.

## **INFORMATION**

1. DEDUCTIONS MUST BE MADE FROM RATED LOADS FOR STOWED JIB, OPTIONAL ATTACHMENTS, HOOKS, AND LOADBLOCKS (SEE DEDUCTION CHART). WEIGHTS OF SLINGS AND ALL OTHER LOAD HANDLING DEVICES SHALL BE CONSIDERED A PART OF THE LOAD.
2. LOAD RATINGS ABOVE THE HEAVY LINE ARE STRUCTURALLY LIMITED CAPACITIES. LOAD RATINGS BELOW THE HEAVY LINE ARE STABILITY LIMITED CAPACITIES AND DO NOT EXCEED 85% OF TIPPING.

## **DEFINITIONS**

1. OPERATING RADIUS IS THE HORIZONTAL DISTANCE FROM THE AXIS OF ROTATION TO THE CENTER OF THE VERTICAL HOIST LINE OR TACKLE WITH LOAD APPLIED.
2. LOADED BOOM ANGLE AS SHOWN IN THE COLUMN HEADED BY  $\angle$ , IS THE INCLUDED ANGLE BETWEEN THE HORIZONTAL AND LONGITUDINAL AXES OF THE BOOM BASE AFTER LIFTING RATED LOAD AT RATED RADIUS.